



Defigard Touch 7 Defibrillator Battery

Important

The battery's performance and life largely depend on how and under which ambient conditions the battery is used.

Main Rechargeable Battery

- The rechargeable power battery is maintenance-free during its normal life.
- The battery must be replaced according:
 - the expired date on the battery, regardless of whether or not the unit has been used or
 - every 3-5 years (or approx. after 1000 typical charge / discharge cycles (i.e. not full charge / discharge cycles))
- **Only store fully charged batteries. If a battery is not used, recharge it every 6 months.**

Safety primary cell

- The safety primary cell is maintenance-free during its normal life.
- The safety primary cell must be replaced according the expired date on the Cell, regardless of whether or not the unit has been used.

Battery Calibration/Conditioning

Every battery has an individual calibration and capacity circuit. The Defigard Touch 7 uses this information to display the battery capacity. New batteries are factory calibrated before use and should not need recalibrating during their normal life cycle. If however a battery seems to have a low capacity or is near the end of its life, Calibration/Conditioning may help prolong the lifespan. Schiller UK recommends the use of the CS-1 Charger to perform this Conditioning/Calibration.

The CS-1 unit has two battery slots that can be used to charge secondary batteries. One slot can also be used to perform the Calibration/Conditioning of the battery. **See page 2 for conditioning process**





Tel: +44 (1333) 312150
 Email: sales@schilleruk.com
 Web: www.schilleruk.com

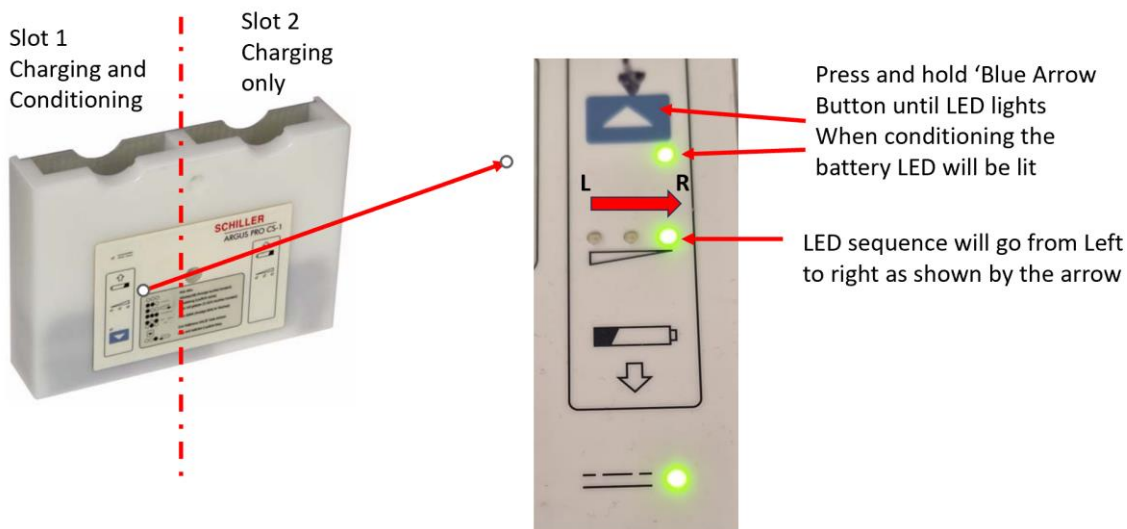
Tel: +44 (1333) 312150
 Email: service@schilleruk.com
 Web: www.schilleruk.com

Battery Conditioning (If required)

Insert battery into Slot 1 (as per picture below)

Press and hold the Blue button until the LED next to the button is illuminated. Conditioning will take approx. 2 Hours to complete

At the end of conditioning all 3 LED's will be illuminated



The LED indicators give the following information:

LED	Function
○ ○ ○	No LEDs lit - No Accumulator inserted.
● ● ○	Constant display for 5 seconds - When an accumulator is first inserted, one, two or three LEDs are lit for 5 seconds. This indicates the accumulator charge state (1 LED = 1/3 capacity, 2 LEDs = 2/3 capacity and 3 LEDs = 100% capacity).
● ○ ○	LEDs blink in sequence (left to right) - After 5 seconds of an accumulator being inserted, the charge sequence starts.
● ● ●	All LEDs lit - accumulator fully charged.
○ ○ ●	LEDs blink in sequence (right to left) - accumulator being calibrated.
● ○ ● ○ ● ○	LEDs blink two/one in sequence - faulty accumulator (or faulty charger).

**** Accumulator = Battery**